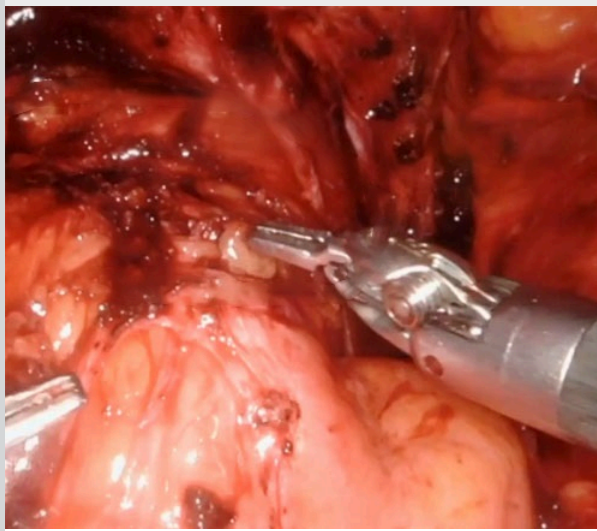


# Clinical Physician Update

November 2024

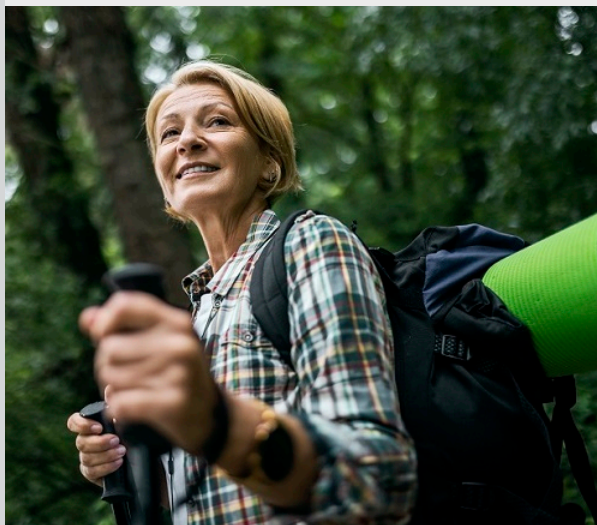
## Patient Care



### Bowel endometriosis: A challenge to detect and surgically excise

Patients with bowel endometriosis spend on average six years with symptoms before diagnosis. Detection and surgical excision of this disease are challenging, yet Mayo Clinic OB-GYN surgeons take it on.

[Learn more](#)



### New drug therapy and regular exercise recommended in 2024 hypertrophic cardiomyopathy clinical guideline

Novel drug therapy and less restricted exercise are recommended in a new ACC and AHA clinical guideline for diagnosing and treating patients with HCM.

[Learn more](#)

[Refer a Patient](#)

Visit the [Medical Professional Video Center](#) to view specialty videos and Grand Rounds presentations

## Research



### Phase 3 study results for metastatic prostate cancer

Metastatic castration-resistant prostate cancer presents treatment challenges, including the side effects of chemotherapy. Researchers have found that lutetium 177 prolongs radiographic progression-free survival in patients yet to receive taxane chemotherapy.

[Learn more](#)



### Dedicated procedures boost cost-effectiveness of awake craniotomy

According to Mayo Clinic research, standardizing protocols for surgery to treat complex brain tumors can lower costs without adversely affecting patient outcomes.

[Learn more](#)

[See all Family Medicine and General Internal Medicine Clinical Trials at Mayo Clinic](#)

## Education

Mayo Clinic School of Continuous Professional Development offers [live courses](#), [livestreaming courses](#), [online continuing medical education \(CME\) courses](#) and [podcasts](#) to meet your CME needs.

See all [Family Medicine and Internal Medicine and Subspecialties Continuing Medical Education courses](#)

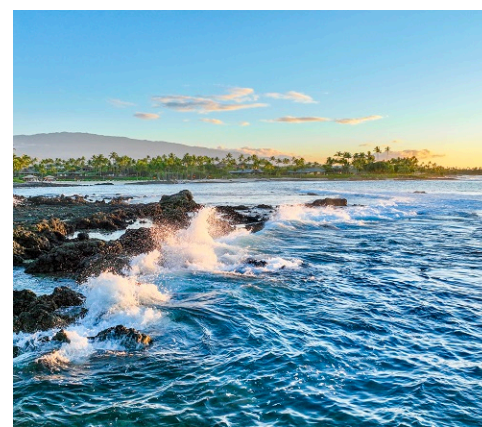


### Integrated Behavioral Health in Primary Care 2025 — Approaches that Work

Jan. 17-18, 2025  
Phoenix and Livestream

This course is designed for healthcare professionals in the many disciplines involved in primary care integrated behavioral health, including psychiatry, psychology, social work, nursing, primary care, pharmacy and pediatrics.

[Register Now](#)



### 37th Annual Selected Topics in Internal Medicine 2025

Jan. 26-31, 2025  
Kamuela, Hawaii, and Livestream

This postgraduate course is designed to update general internists, internist-subspecialists, family medicine specialists and other primary healthcare professionals on selected internal medicine topics.

[Register Now](#)

## Consults and Referrals

Phoenix/Scottsdale, Arizona  
866-629-6362

Jacksonville, Florida  
800-634-1417

Rochester, Minnesota  
800-533-1564

[Online Referrals](#)

## Resources

[Life-Changing Careers](#)

[Clinical Trials](#)

[Mayo Clinic School of Continuous Professional Development](#)



[Comments?](#)

We're interested in your feedback about this newsletter.

[Pass It On](#)

Invite a friend to subscribe.

[MayoClinic.org](#) | [Newsletter Archive](#) | [Contact](#) | [Medical Professionals](#)